

Create blended night
simulation displays...
faster than ever before.

*Helicopter Simulator
2 high x 3 wide
Projection System –
No Seams*



Night scene before Mallard Masking:



Night scene after Mallard Masking:



MALLARD

PictureBlend

Blocks Light, Blends Night! A patent pending, cost and time saving optical baffle system available only from *Electric Picture Display Systems*.



Night Training has become a larger part of simulation and multi-image projection bringing with it an unwanted side effect of overlapped projected light. To eliminate this problem, optical masking is required. Until now, optical masking solutions were expensive to buy, install, and adjust.

Mallard PictureBlend raises the bar set by Mantis shadow mask with an affordable solution that is fast and easy to install, adjust and maintain.



Phone: 321-757-8484
Toll Free: 877-550-0900
www.electricpicture.com



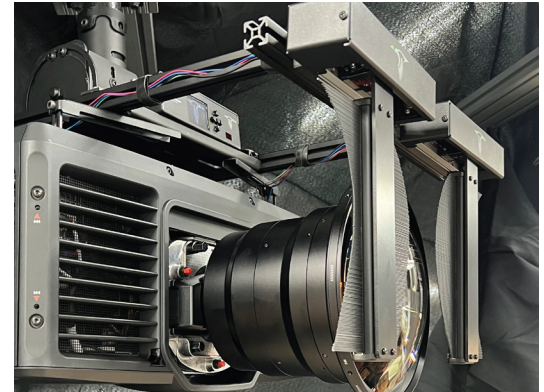
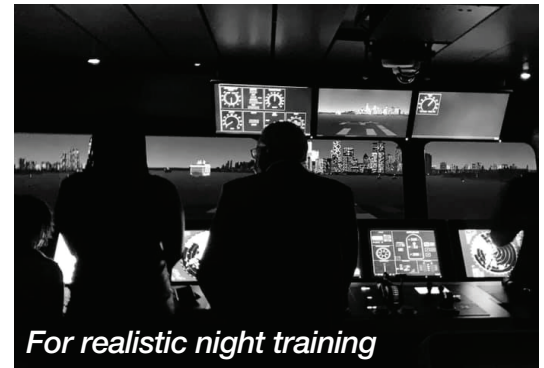
MALLARD

PictureBlend

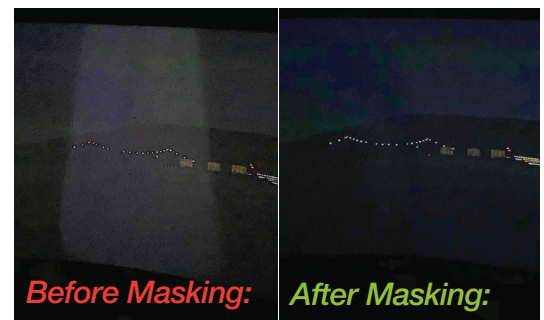
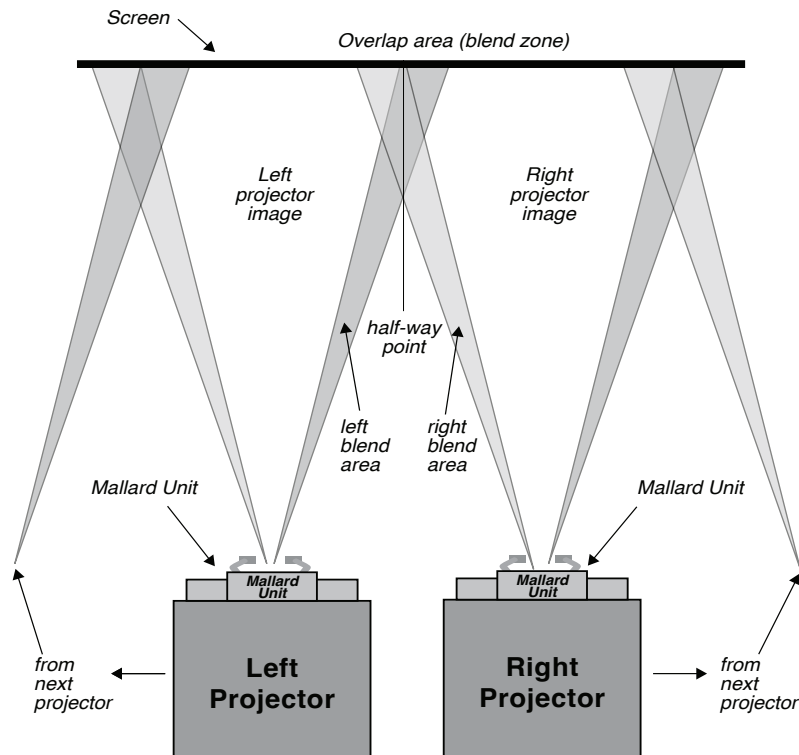
Blocks Light, Blends Night!

Electric Picture Display Systems' Mallard PictureBlend System precisely masks unwanted light WHEN and WHERE needed. This proprietary technology features flexible masking and programmable control. Features include:

- Multiple position presets for day, night and dusk/dawn
- Optimized for curved and spherical simulation surfaces
- Easily controlled remotely via touch screen panel
- Easily integrated with Blending/Warping software
- Unit and System API interfaced via ethernet
- 4-step electromechanic actuation for greater accuracy and repeatability
- Fast Installation – in as little as 15 min/channel
- Quiet Operation – to enhance simulation experience




Mallard Specifications:



2 Models to Fit your Projection Application:

EP-MAL-S Standard Mallard Mode used for landscape applications

EP-MAL-XL Extended Mallard Model used for portrait applications as well as special lenses which rely on Mallard to be situated further from the body of the projector, where image is larger.



Electric Picture
DISPLAY SYSTEMS
www.electricpicture.com

Electric Picture Display Systems, Inc
6425 Anderson Way
Melbourne, FL 32940 USA
Phone: 321-757-8484
Fax: 321-757-8554
Toll Free: 877-550-0900



Additional Specs	
Max. Input Current:	1.65A
Nominal Input Current:	0.8A
Rated Power:	65W
Input Voltage:	85 to 264VAC @ 47-63Hz
Efficiency	90%
Output voltage:	24VDC & 5VDC
Voltage Regulation:	±1.5%
Output Current	1.5A & 6A
Operating Temperature:	-30°C to +60°C
Storage Temperature:	-40°C to +85°C
Humidity:	95% Max (non-condensing)
Material	Aluminium
Dimensions:	435mm x 165mm x 54mm
Dimensions w/Baffles:	435mm x 368mm x 54mm
Weight:	9.5 lbs
Color:	Black
Motor type:	Nema 11
Motor Stroke:	100mm
Motor Drive:	Tr8*2
Motor Pitch:	2mm per revolution
Motor Step:	1.8° => 0.01mm per step
IEC:	13